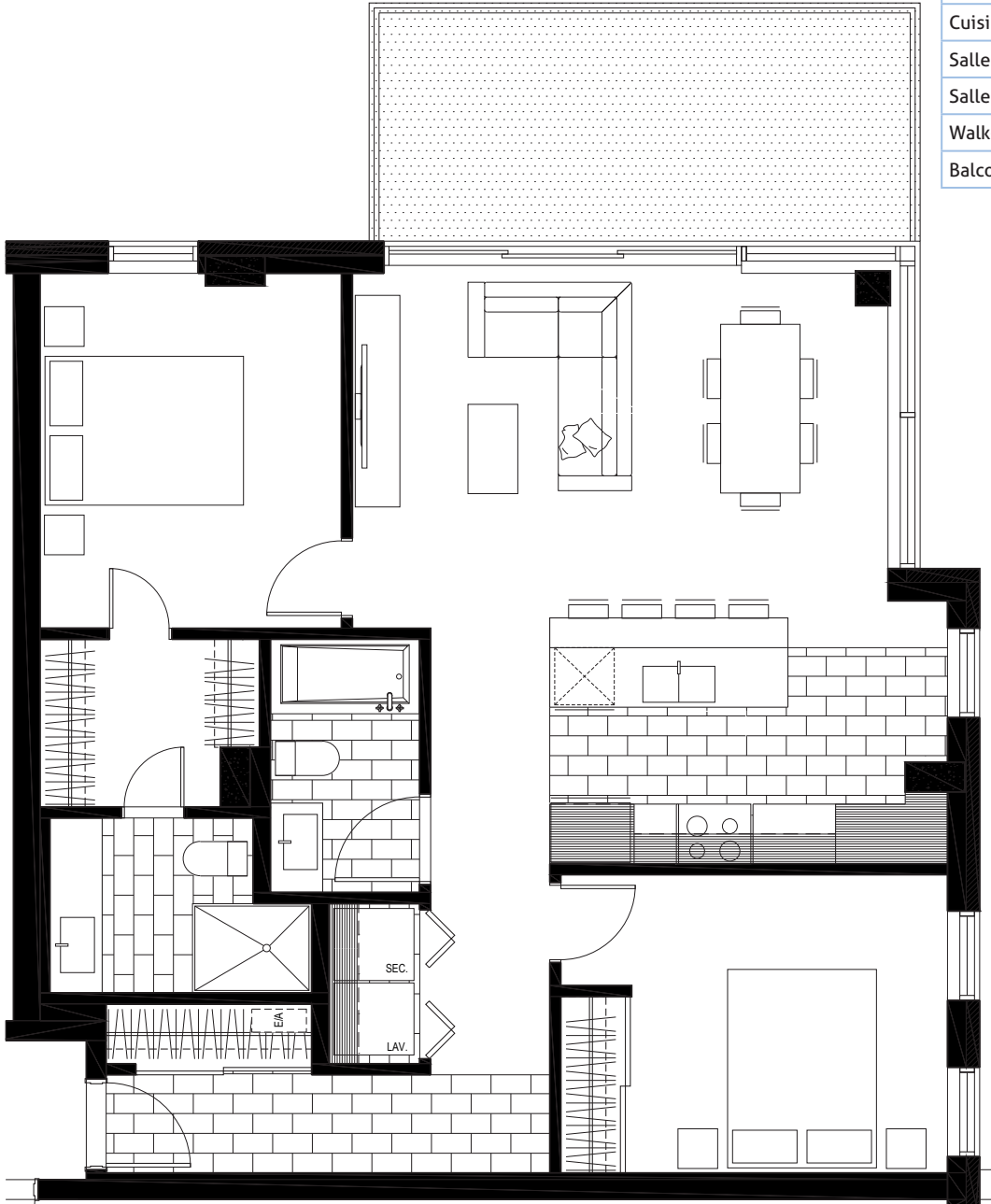
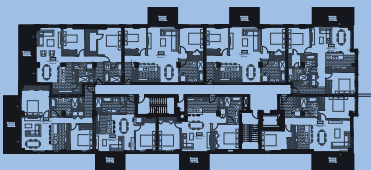




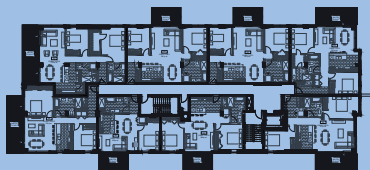
Salon et salle à manger	18'-0" x 11'-7"
Chambre principale	10'-2" x 11'-11"
Deuxième chambre	10'-7" x 10'-0"
Cuisine	13'-4" x 8'-3"
Salle de bain 1	5'-0" x 8'-6"
Salle de bain 2	7'-1" x 5'-10"
Walk-in	7'-5" x 5'-7"
Balcon	18'-6" x 8'-0"



Plan du niveau 2



Plan du niveau 3



Plan du niveau 4

