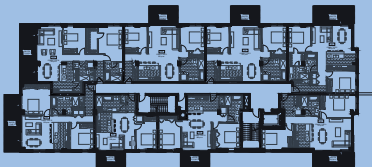




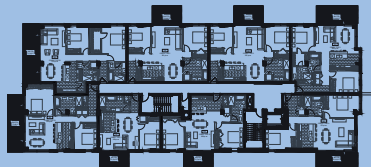
Salon et salle à manger	13'-5" x 16'-7"
Chambre 1	10'-3" x 11'-5"
Chambre 2	9'-11" x 13'-3"
Cuisine	10'-0" x 8'-3"
Salle de bain	8'-8" x 12'-4"
Balcon	13'-0" x 8'-0"



Plan du niveau 2



Plan du niveau 3



Plan du niveau 4

